

USER MANUAL



MD300 fire detection control panel

Brief operation

01-07-2013

LIMOTEC bvba

Bosstraat 21

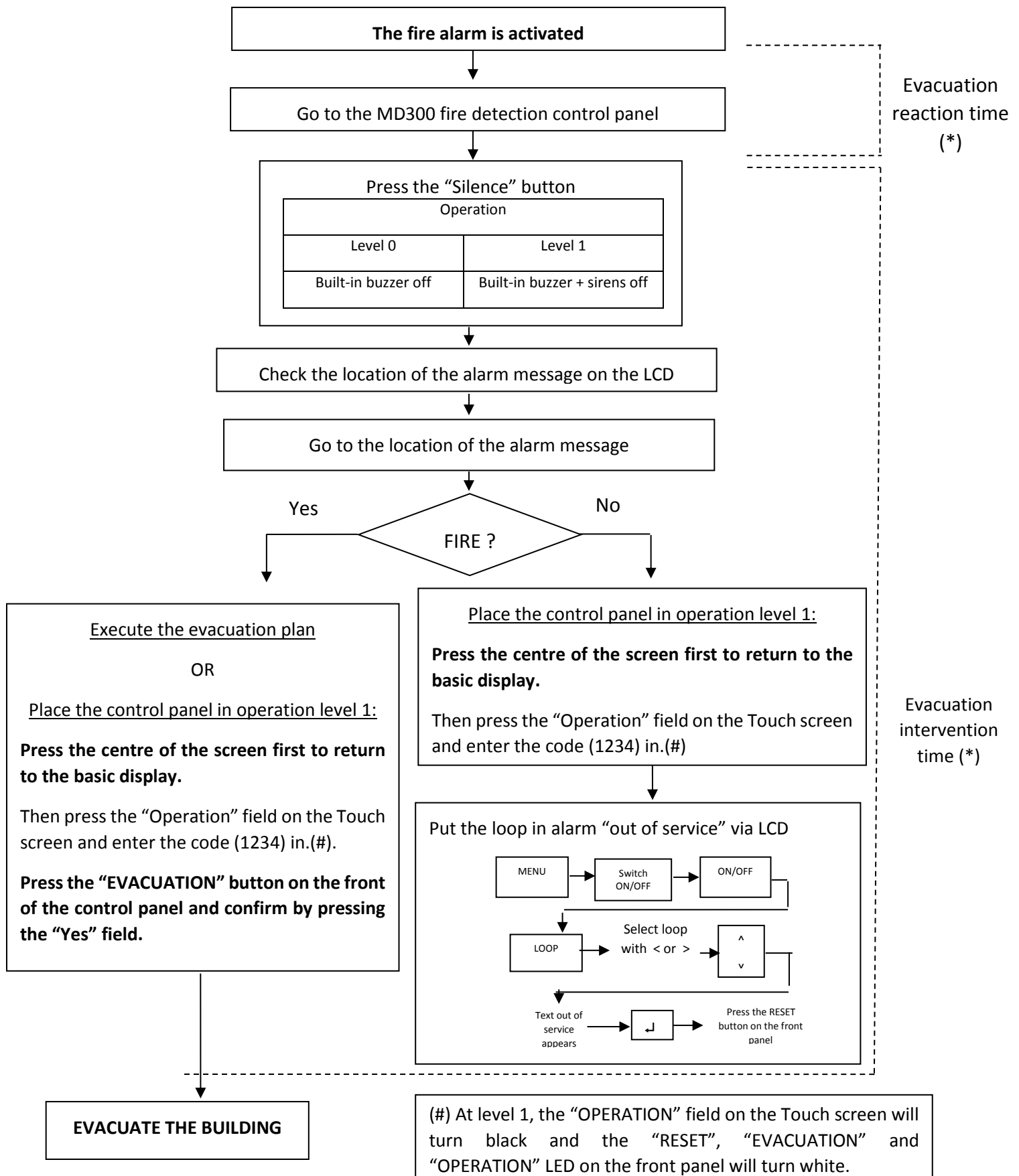
B – 8570 Vichte

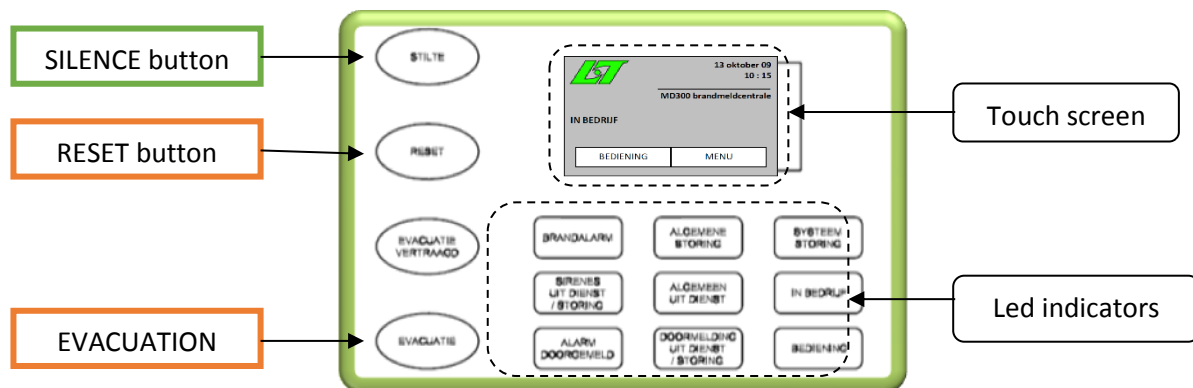
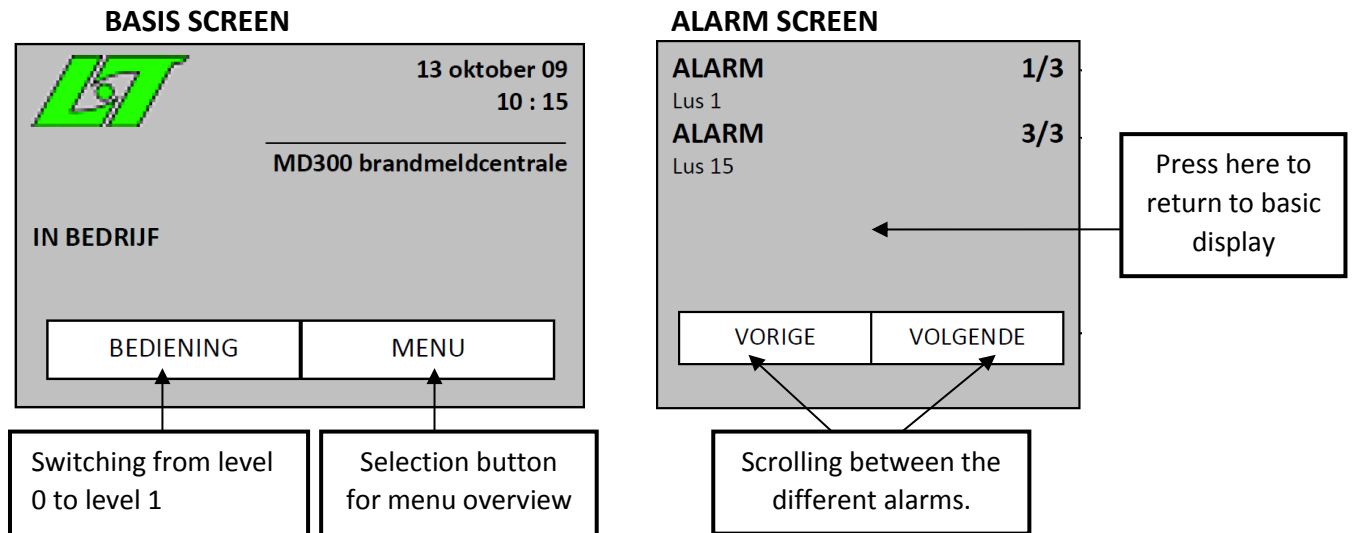
Tel +32 (0) 56 650 660

www.limotec.be

HG0300E03C

BRIEF OPERATION OF MD300 CONTROL PANEL





TIME DELAYS:

Evacuation – reaction time: (1-9 minutes)	This is the time between the alarm message on the control panel and the acceptance of the alarm by means of the “Silence” button on the operating front of the MD300 control panel. If the alarm was not accepted after the reaction time has elapsed, the evacuation procedure starts.
Evacuation – intervention time: (1-9 minutes)	This is the time from the acceptance of the alarm by means of the “Silence” button on the operating front of the MD300 control panel. If the alarm was not accepted after the intervention time, the evacuation procedure starts. Restart the intervention time by pressing the “Silence” button on the operating front of the control panel.
Battery error: 10 minutes delayed	“Silence” does not affect the delay time “Reset” restarts the delay time
Mains voltage fault: 30 minutes delayed	This is immediately reported in the control panel’s logbook “Silence” does not affect the delay time “Reset” restarts the delay time

(*) : Contact your installer for the correct setting of the time delays.